

The Hella Accessory Guide

Plus Beacons, Work Lamps & more!



*Ideas today for
the cars of tomorrow*

Index of Products



LED 2
70mm, Taillamp Upgrades, Daytime Running Lights



Xenon (HID) 4
New Rallye 4000i & 4000Xi Xenon, Rallye 4000 Xenon, Micro DE Xenon, FF200 Xenon, Jumbo 320 Xenon and more!



Halogen 10
500, 500FF, 700FF, Black Magic, Hella 550, Rallye 4000, Rallye 3000, Micro DE, FF75, FF50, Micro FF, Optilux 1900 and more!



Upgrades & Accessories 18
F-150 Upgrade Kits, Silverado, Ram, Tundra, and BMW Taillamps, Tire Pressure Monitoring System, Supertone Horns, Trumpet Horns and more!



Bulbs 26
High Performance Xenon Blue Bulbs, High Performance Xenon Yellow Bulbs, Xenon (HID) Capsules, Standard Bulbs, Optilux Bulbs and more!



Work Lamps 30
Hella Retail Work Lamp Program, AS300/400 Xenon



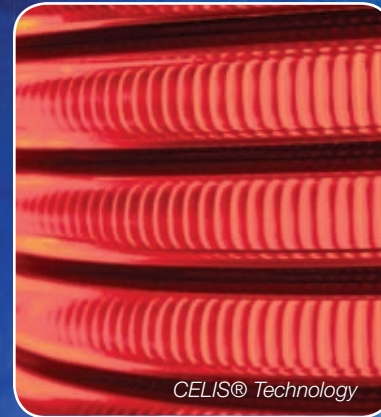
Optical Warning 32
Full Range Overview



Switches & Relays 34
Universal Switches and Spare Electrical Parts

Hella Resources 36
myhellalights.com, DIYs and Techs, Collision and Spare Parts, Behr Hella Service

Hella Technology



Free-Form Technology
– Free Form reflectors use as many as 50,000 points to precisely direct light producing up to three times more illumination than ordinary lights with even spread and almost no stray light.

CELIS® Technology
– Most widely known as the “Angel Eyes” look, CELIS® (Central Lighting Systems) is a revolution in vehicle lighting. Extremely flexible fiberglass “light guides” ranging from one to seven

millimeters transport light from a single source into shapes not traditionally found in automotive lighting.

DE (Projector Light) – An elliptical reflector directs the light to a focusing lens that bundles it and projects it onto the road. A shield positioned between the reflector and the lens provides precise cutoff.

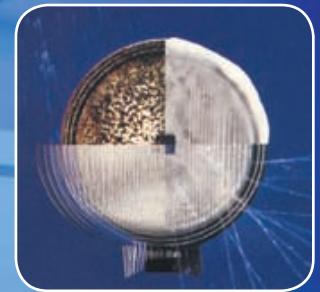
Xenon technology – A Xenon bulb provides nearly 3 times as much light as a modern H7 halogen bulb, but consumes only one third of the power. The light emitted by the Xenon bulb also has a whiter color temperature that is more similar to daylight than a halogen bulb.

Bi-Xenon® technology – One Xenon lamp module performs both high and low beam functions.

Testing

Hella auxiliary lamps are legendary for their ruggedness and dependability. Every one of our lamps must pass a series of endurance tests before we will brand it “Hella”.

1. Five hours of off-road driving are simulated by uniform spraying with mud.
2. For one hour, the headlamps are subjected to temperatures between -40°F and +176°F. Shock treatment between the arctic and tropics.
3. For one hour, the headlamps are sprayed with water at a pressure of 58 psi. This simulates driving in torrential rain.
4. One hour of vibration testing at 750 oscillations per minute. This simulates the toughest conditions resulting from potholes, cobblestone pavement, and other off-road tortures.



Always check local regulations before installing any auxiliary/ aftermarket lighting to ensure you meet all legal requirements.

All products listed are 12V unless otherwise noted.

LED Technology

Light-emitting diodes emit a small area of spectrum light used to create different contours and colors. The advantages of LED are low power consumption, exceptionally long service life, no bulb replacement, and even light emission. Hella is expanding its range of LED products in all areas of expertise including Vehicle Upgrades and Auxiliary Lamps.



Upgrade Taillamps

See page 19 – 21 for LED/CELIS® Upgrade Taillamps for Ford, Silverado, RAM and Tundra.

Auxiliary Lamps

70mm LED

NEW!

Ideal for:

- Off-road driving
- Dual Sport Mounting
- Heavy-Duty working environments

Features:

- 4 High performance LED's
- Close range illumination
- Color Temperature 6500K
- Low power consumption – only 7 Watts, light intensity about 250 lm
- Multivoltage 12 - 24V , reverse battery and over voltage protection
- Very high lifespan - no bulb change necessary
- LED work lamp is suitable for use under very rough conditions
- Dust- and waterproof – degree of protection: IP6K7 and IP6K9K
- Aluminum die cast housing, clear glass lens, stainless steel bracket
- Operation temperature -40°C - +50°C
- Incl. connection cable of 2 m, potted cable version
- Back of the housing with large cooling ribs for optimized heat dissipation

Technology:

LED technology

Dimensions: 83 x 111 x 75 mm

Vehicle Lighting

Daytime Running Lights

Ideal for:

- Safety in traffic
- High visibility for other drivers
- Universal application

Features:

- Five high performance LEDs
- Attractive, clear-glass design matching current main and auxiliary headlights
- Stable plastic housing
- SAE/DOT compliant
- Trouble-free installation through diverse installation options

Technology:

LED technology – Hella LED daytime running lights last up to 30 times longer than H7 bulbs and do not cause additional consumption in comparison with driving without lights on

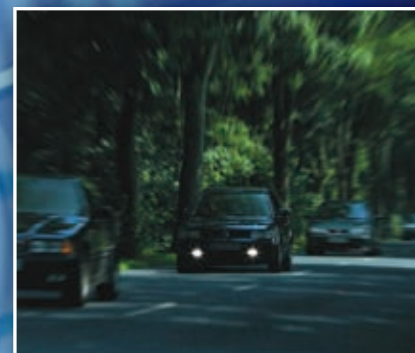
Kit includes:

Left and right light units, harness, mounting hardware, mounting instructions

Dimensions: 220 x 28 x 90 mm

Part No:

Universal LED Daytime Running Light Kit 010043801



See page 22 for Dual Sport Mounting Bracket to mount your 70mm LEDs.





Rallye 4000*Xi*

*X*over *i*ntegrated



NEW Modern Design!

Ideal for:

- Off-Road Racing
- Power Sports

Features:

- Compact size
- Internal ballast
- Position securing lock
- Powder-coated housing
- Modern design

Technology:

Xenon technology, Free-Form technology

Single Lamp includes:

Lamp, D1S Xenon capsule, ballast, wiring harness, relay, and mounting hardware

Dimensions: 145 x 127 x 116mm

Part No:

Rallye 4000Xi Xenon Driving Lamp, 12V 010186011

Accessories & Spare Parts

147945001	Stone Shield - Rallye 4000 Series
H87988131	Clear Cover - Rallye 4000 Series
H87988451	Clear - Color Shieldz Protective Laminates (pair)
H87988341	Blue - Color Shieldz Protective Laminates (pair)
H87988351	Yellow - Color Shieldz Protective Laminates (pair)
H87988361	Smoke - Color Shieldz Protective Laminates (pair)
148995001	Protective Grille - Rallye 4000 Series
H83074001	D1S 35W HID Capsule
149147001	Wiring Harness - High Performance Xenon

Rallye 4000*i*

Xenon



Full Size

Compact

NEW!

Ideal for:

- Off-Road Racing
- Extreme terrain
- Long Distance night vision
- Off-Road use only

Features:

- Internally-mounted ballast
- Powder-coated housing
- Modern design

Technology:

Xenon technology, Free-Form technology

Single Lamp includes:

Lamp, D2S Xenon capsule, ballast, wiring harness, relay, and mounting hardware

Dimensions: 222 x 222 x 153mm

Compact Dimensions: 170 x 171 x 139mm

Part No:

Rallye 4000i Xenon Flood Light, 12V.....	007560751
Rallye 4000i Xenon Pencil Beam, 12V.....	007560761
Rallye 4000i Xenon Driving Lamp, 12V.....	007560771
Rallye 4000i Compact Xenon Driving Lamp, 12V.....	009094331
Rallye 4000i Compact Xenon Pencil Beam, 12V.....	009094321

***i*NTelligent design**
off-road *i*NTENSITY
***i*MPROVED bracket**
***i*NTEGRATED ballast**
***i*NCOMPARABLY Hella!**





Rallye 4000 Xenon

Ideal for:

- Off-Road Racing
- Extreme terrain
- Long Distance night vision
- Off-Road use only

Features:

- Robust, black powder coated housing with red accent ring
- Optimized reflector for more homogenous illumination
- High-quality tempered glass lens
- Knurled adjustment knobs

Technology:

Xenon technology, Free-Form technology

Single Lamp includes:

Lamp, D2S Xenon capsule (4000FF uses D1S), ballast, wiring harness, relay, and mounting hardware

Dimensions: 222 x 232 x 161mm

Part No:

Rallye 4000 Xenon Pencil Beam	007560552
Rallye 4000 Xenon Euro Beam	007560542
Rallye 4000FF Xenon Pencil Beam	007560611
Rallye 4000FF Xenon Driving Lamp	007560621
Rallye 4000FF Xenon Flood Lamp	007560601

Accessories & Spare Parts

147945001	Stone Shield - Rallye 4000 Series
H87988131	Clear Cover - Rallye 4000 Series
H87988451	Clear - Color Shieldz Protective Laminates (pair)
H87988341	Yellow - Color Shieldz Protective Laminates (pair)
H87988351	Blue - Color Shieldz Protective Laminates (pair)
H87988361	Smoke - Color Shieldz Protective Laminates (pair)
148995001	Protective Grille - Rallye 4000 Series
H83075001	D2S 35W HID Capsule
149147001	Wiring Harness - High Performance Xenon



Pencil Beam

Euro Beam

Rallye 4000 Compact Xenon



Ideal for:

- Off-road driving
- Off-road racing

Features:

- Zinc die-cast metal housing with matte black finish
- Crystal clear glass design
- 24% smaller than Rallye 4000 Xenon

Technology:

Xenon technology, Free-Form technology

Single Lamp includes:

Lamp, generation 4 ballast and D1S Xenon capsule

Dimensions: 170 x 172 x 114mm

Part No:

Rallye 4000 Compact Xenon Euro Beam	009094141
Rallye 4000 Compact Xenon Pencil Beam	009094121

Accessories & Spare Parts

165048001	Stone Shield - Rallye 4000 Compact Series
H87988221	Clear Cover - Rallye 4000 Compact Series
H87988371	Clear - Color Shieldz Protective Laminates (pair)
H87988391	Yellow - Color Shieldz Protective Laminates (pair)
H87988381	Blue - Color Shieldz Protective Laminates (pair)
H87988401	Smoke - Color Shieldz Protective Laminates (pair)
H83074001	D1S 35W HID Capsule
149147001	Wiring Harness - High Performance Xenon

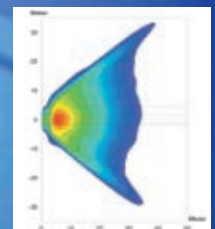
Beam Pattern Examples



Pencil Beam



Euro Beam



Fog Beam



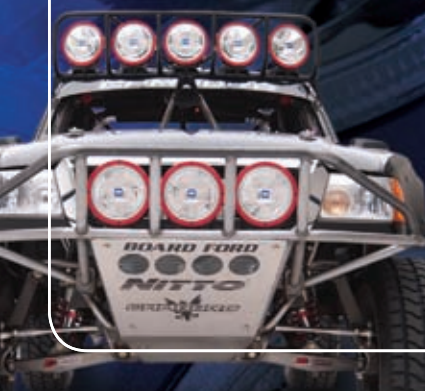
Driving Beam



Flood Beam



Free-Form Euro Beam





90mm Xenon Module

Ideal for:

- Custom Headlamp replacement
- Endurance racing
- Retrofit

Technology:

Xenon technology, Bi-Xenon® technology, DE (Projector Light)

Dimensions: 169 x 123 x 196mm

Single Lamp includes:

Bi-Xenon® Module – Lamp with generation IV ballast unit, D1S Capsule
 Low-Beam Module – Lamp with generation III ballast unit, D2S Capsule
 High-Beam Module – Lamp with generation III ballast unit, D2S Capsule

Part No:

90mm Bi-Xenon® Module (SAE/DOT) 008934041
 90mm Xenon Low Beam Module (SAE/DOT)..... 008194047
 90mm Xenon High Beam Module w/Position Light (ECE)..... H11192001

50mm Xenon Module

Ideal for:

- Custom Headlamp replacement
- Endurance racing
- Motorcycles, ATVs, sports car

Technology:

Xenon technology, Free-Form technology, DE (Projector Light)

Dimensions: 91 x 80 x 144mm

Single Lamp includes:

Lamp with generation III ballast unit

Part No:

50mm Xenon Low Beam Module (SAE/DOT)..... 009071091
 50mm Xenon High Beam Module (ECE Only)..... 008390317



FF200 Xenon

Ideal for:

- Additional driving light
- Endurance racing
- Motorcycles and sports cars

Technology:

Xenon technology, Free-Form technology

Kit includes:

Two lamps with D2S Xenon capsules, two generation III ballast units, wiring harness, relay and mounting instructions.

Dimensions: 144 x 152 x 100mm

Part No:

FF200 Xenon Driving Lamp Kit 007893871



Jumbo 320 Xenon

Ideal for:

- Additional driving light
- Trucks, SUVs, OTR Vehicles

Technology:

Xenon technology, Free-Form technology, LED technology

Dimensions: 245 x 161 x 109mm

Single Lamp includes:

Lamp with D1S Xenon capsule, generation IV ballast unit, wiring harness, relay and mounting instructions.

Part No:

Jumbo 320 Xenon w/LED Position Light..... H12773021



Micro DE Xenon

Ideal for:

- Additional driving light
- Trucks, SUVs, Dual Sport Mounting System

Technology:

Xenon technology, DE (Projector Light)

Dimensions: 92 x 84 x 120mm

Single Lamp includes:

Two lamps, two D2S Xenon capsules, two generation IV ballast units, wiring harness, relay and mounting instructions.

Part No:

Micro DE Xenon Driving Lamp Kit 008390801



*See page 22 for motorcycle bracket for Dual Sport Mounting!

Hella 500, 500FF & 700FF

Ideal for:

- Rural, night driving
- Off-road activity

Features:

- Light-weight design
- Aluminum vapor-coated reflector
- Sturdy, shock-proof housing

Dimensions:

500 & 500FF – 175 x 163 x 67mm
700FF – 218 x 186 x 88mm

Technology:

500 & 500 Fog – Parabolic reflector
500FF & 700FF – Free-Form Technology

Kit includes:

Two Halogen driving beam lamps, two protective stone shields, two bulbs H3 12V/55W, one complete plug & play harness, one illuminated switch, one 12V relay, step-by-step mounting instructions

Part No:

Hella 500 Driving Lamp Kit.....	005750952
Hella 500 Fog Lamp Kit.....	H13750611
Hella 500FF Driving Lamp Kit.....	005750941
Hella 500FF Fog Lamp Kit.....	005750981
Hella 700FF Driving Lamp Kit.....	010032801

Accessories & Spare Parts

135236021	Stone Shield, white - 500, 500FF Series
H87988081	Clear Cover - 500, 500FF Series
165530801	Protective Grille - 500, 500FF Series (pair)
H83135302	H3 55W 12V - High Performance Xenon Blue Bulbs (pair) DOT/SAE
H83135051	H3 55W 12V - Hella Standard Bulb (single) DOT/SAE
H71070242	H3 100W 12V - Optilux Extreme Blue XB Bulb (single) Off-Road Only
H71070662	H3 55W 12V - Optilux Extreme Yellow XY Bulb (pair) Off-Road Only
H84994031	Wiring Harness - High Performance Halogen
003510367	Mini Relay 15 Amp w/Blade Fuse

500FF

500

700FF



Features:

- Protects auxiliary lamps from scratches, cracks and chips
- Colors provide unique look for auxiliary lamps
- Peels off easily leaving no residue

Color Shieldz for Hella 500, 500FF

H87988411	Clear - Color Shieldz Protective Laminates (pair)
H87988431	Yellow - Color Shieldz Protective Laminates (pair)
H87988421	Blue - Color Shieldz Protective Laminates (pair)
H87988441	Smoke - Color Shieldz Protective Laminates (pair)

Color Shieldz for Rallye 4000 Compact, Rallye 3000 Compact

H87988371	Clear - Color Shieldz Protective Laminates (pair)
H87988391	Yellow - Color Shieldz Protective Laminates (pair)
H87988381	Blue - Color Shieldz Protective Laminates (pair)
H87988401	Smoke - Color Shieldz Protective Laminates (pair)

Color Shieldz for Rallye 4000

H87988451	Clear - Color Shieldz Protective Laminates (pair)
H87988341	Blue - Color Shieldz Protective Laminates (pair)
H87988351	Yellow - Color Shieldz Protective Laminates (pair)
H87988361	Smoke - Color Shieldz Protective Laminates (pair)



Rally 4000

Ideal for:

- Rural, night driving
- Off-road activity

Features:

- High-gloss matte black metal or chrome housing
- Structured glass lens
- Knurled knobs for fast lamp adjustments

Technology:

Free-Form technology, CELIS® technology

Dimensions: 222 x 232 x 161mm

Single Lamp includes:

Lamp, bulb, mounting hardware. Wiring harness sold separately.

Part No:

Rally 4000 Single Black Euro Beam w/Position Lamp (H1).....	H12560031
Rally 4000 Single Black Euro Beam Lamp (H1).....	H12560021
Rally 4000 Single Black Cornering Beam Lamp (H1).....	H12560051
Rally 4000 Single Black Pencil Beam Lamp (H1).....	H12560061
Rally 4000 Single Black Fog Lamp (H3).....	H12560001
Rally 4000 Single Chrome Euro Beam w/Position Lamp (H1).....	H12560041
Rally 4000 Single Chrome Fog Lamp (H3).....	H12560011
Rally 4000 Single Chrome Euro Beam w/CELIS® & Position Lamp (H1).....	H12560121
Rally 4000FF Black.....	007560361
Rally 4000FF Chrome.....	007560371



CELIS® Chrome Black

Rally 3000/4000 Compact

Ideal for:

- Rural, night driving
- Off-road activity

Features:

- Zinc die-cast metal housing
- Optimized Free-Form reflector
- Crystal clear glass design
- 24% smaller than Rallye 4000

Technology:

Free-Form Technology

Dimensions: 170 x 172 x 114mm

Single Lamp includes:

Lamp, bulb, cover, and mounting hardware. Lamp requires wiring harness, sold separately. Bulb not included for Rallye 3000 Compacts.

Part No:

Rallye 4000 Compact Black Pencil Beam.....	009094211
Rallye 4000 Compact Black Driving Lamp.....	009094181
Rallye 3000 Compact Driving Lamp.....	009390011
Rallye 3000 Compact Fog Lamp.....	009390001



4000
Compact
Driving



3000
Compact
Driving

Accessories & Spare Parts

147945001	Stone Shield - Rallye 4000 Series
H87988131	Clear Cover - Rallye 4000 Series
165048001	Stone Shield - Rallye 4000 Compact Series
H87988221	Clear Cover - Rallye 4000 Compact Series
H87988451	Clear - Color Shieldz Protective Laminates (pair)
H87988341	Blue - Color Shieldz Protective Laminates (pair)
H87988351	Yellow - Color Shieldz Protective Laminates (pair)
H87988361	Smoke - Color Shieldz Protective Laminates (pair)
H87988371	Clear - Color Shieldz Protective Laminates (pair) Cpt
H87988391	Yellow - Color Shieldz Protective Laminates (pair) Cpt
H87988381	Blue - Color Shieldz Protective Laminates (pair) Cpt
H87988401	Smoke - Color Shieldz Protective Laminates (pair) Cpt
H83135302	H3 55W 12V - High Performance Xenon Blue Bulbs (pair) DOT/SAE
H83135051	H3 55W 12V - Hella Standard Bulb (single) DOT/SAE
H83115202	H1 55W 12V - High Performance Xenon Blue Bulbs (pair) DOT/SAE
H83115001	H1 55W 12V - Hella Standard Bulb (single) DOT/SAE
H83145112	H7 55W 12V - High Performance Xenon Blue Bulbs (pair) DOT/SAE
H83145031	H7 55W 12V - Hella Standard Bulb (single) DOT/SAE
H84994031	Wiring Harness - High Performance Halogen



Black Magic

Ideal for:

- Rural, night driving
- Off-road activity

Features:

- Innovative Black Optics® technology creates unique blackout look when off
- Brilliant white driving beam when on
- Reinforced ABS housing
- Super slim design

Dimensions: 186 x 218 x 88mm

Kit includes:

Two lamps, two H2/55W bulbs, wiring harness, switch, relay, and mounting hardware.

Part No:

Black Magic Driving Lamp Kit 004700771

Hella 550

Ideal for:

- Rural, night driving
- Off-road activity

Features:

- Light-weight Design
- Aluminum vapor-coated reflector
- Sturdy, shock-proof housing

Dimensions: 195 x 119 x 83mm

Kit includes:

Two Halogen driving beam lamps, two protective stone shields, two bulbs H3 12V/55W, complete plug & play harness, illuminated switch, relay, mounting instructions

Part No:

Hella 550 Driving Lamp Kit 005700891

Hella 550 Fog Lamp Kit 005700901

Micro DE

Ideal for:

- Additional driving light

Features:

- Our most popular and versatile fog lamp
- High performance in a compact design
- Magnesium housing and reflector
- Exceptional performance and light distribution

Technology: DE (Projector Light)

Dimensions: 66 x 81 x 140mm

Kit includes:

Two lamps, two H3 bulbs, wiring harness, relay and mounting hardware

Part No:

Micro DE Fog Lamp Kit H13090611

Micro FF

Ideal for:

- Additional driving light

Features:

- Compact design
- Clear glass lens with black housing
- Optimized Free-Form reflector

Dimensions: 120 x 87 x 65mm

Kit includes:

Two lamps, two H7 bulbs, two stone shields, wiring harness, relay and mounting hardware

Part No:

Micro FF Driving Lamp Kit 007133811

Micro FF Fog Lamp Kit 007133801

Accessories & Spare Parts

130331001	Stone Shield - Black Magic/Rallye 1000 Series
H87988121	Clear Cover -Black Magic/Rallye 1000 Series
135037001	Stone Shield - 550 Series
H87988111	Clear Cover - 550 Series
H83135302	H3 55W 12V - High Performance Xenon Blue Bulbs (pair) DOT/SAE
H83135051	H3 55W 12V - Hella Standard Bulb (single) DOT/SAE
H83130001	H2 55W 12V - Hella Standard Bulb (single) DOT/SAE
H83145112	H7 55W 12V - High Performance Xenon Blue Bulbs (pair) DOT/SAE
H83145031	H7 55W 12V - Hella Standard Bulb (single) DOT/SAE
H84994031	Wiring Harness - High Performance Halogen
H84994051	Wiring Harness - FF Series Halogen

FF75 & FF50

Ideal for:

- Additional driving light

Features:

- Clear glass lens
- Compact, long, flat design - convenient for tight places
- Magnesium Free-Form reflector for optimal light output
- Magnesium provides high thermal resistance that prevents warping

Dimensions: FF75 – 155 x 64 x 98mm, FF50 – 117 x 73 x 96mm

Kit includes:

Two lamps, two H7 bulbs, wiring harness, relay and mounting hardware

Part No:

FF75 Driving Lamp Kit	008284811
FF75 Fog Lamp Kit	008284801
FF75 Blue Driving Lamp Kit	008284861
FF50 Driving Lamp Kit	008283811
FF50 Fog Lamp Kit	008283801
FF50 Blue Driving Lamp Kit	008283861

Tuner Modules

Ideal for:

- Retrofitting
- Custom Tuning

Technology:

DE (Projector Light), Free-Form Technology

Dimensions: 90mm – 85 x 90 x 102mm, 50mm – 73 x 73 x 140mm

Single Lamp includes:

Lamp. H9 bulb sold separately.

Part No:

90mm DE Halogen Low Beam Module (SAE/DOT)	008193027
90mm High Beam Module (SAE/DOT)	008191057
50mm High Beam Module	009486001
50mm Fog Beam Module	008090317

Accessories & Spare Parts

H87236051	Stone Shield - FF75 Series
H87988011	Clear Cover - FF75 Series
H87988001	Clear Cover - FF50 Series
H83145112	H7 55W 12V - High Performance Xenon Blue Bulbs (pair) DOT/SAE
H83145031	H7 55W 12V - Hella Standard Bulb (single) DOT/SAE
H83357011	H9 65W 12V - High Performance Xenon Blue Bulbs (pair) DOT/SAE
008357001	H9 65W 12V - Standard Bulb (single) DOT/SAE
H84994051	Wiring Harness - FF Series Halogen

Conversion Headlamps

Ideal for:

- Retrofitting

Features:

- Produces 50% more powerful beam on low beam
- Produces 25% more powerful beam on high beam
- Single lamp fits left or right

200mm, 7" Single Lamps include:

Lamp, HB2/9003 bulb, dust cover

200mm, 7", 165mm High/Low Beam & 5-3/4" High/Low Beam Kits include:

Two lamps, two H4 bulbs, two dust covers

165mm High Beam & 5-3/4" High Beam Kits include:

Two lamps, two H1 bulbs, two dust covers

Part No:

200mm Single Conversion Headlamp (SAE/DOT)	003427291
200mm High/Low Beam Conversion Headlamp Kit (ECE/CAN)	003427811
7" High/Low Beam Single Conversion Headlamp (SAE/DOT)	002395301
7" High/Low Beam Conversion Headlamp Kit (ECE/CAN)	002395801
165mm High/Low Beam Conversion Headlamp (ECE/CAN)	003177871
165mm High Beam Conversion Headlamp Kit (ECE/CAN)	003177821
5-3/4" High/Low Beam Conversion Headlamp Kit (ECE/CAN)	002850811
5-3/4" High Beam Conversion Headlamp Kit (ECE/CAN)	002425811

Optilux 1900

Ideal for:

- Off-Road Driving Only

Features:

- Reinforced chrome steel housing
- Rubber mounting brackets

Kit includes:

Two lamps, two H3/100W bulb, two stone shields, mounting hardware, wire harness and mounting instructions.

Part No:

Optilux 1900 Chrome Spot Lamp	H71020801
-------------------------------------	-----------

For more information about ECE and SAE regulations, visit the FAQ section of www.myhellalights.com. Some information and accessories have been eliminated in this brochure due to space. A complete listing of spare parts and accessories for all products is available on the website.

F-150 Upgrade Headlamp Kit

Features:

- Matte black housing which produces "blackout" look
- Carbon-fiber insert
- Easy plug & play installation

Kit includes:

Two headlamps, mounting instructions. H13 Bulb not included.

Part No:

F-150 Blackout Headlamp Kit for 04-08 models..... 009456801

F-150 Upgrade Grille w/Halogen or Xenon Auxiliary Lamps

Features:

- Reinforced & upgraded composite grille
- Composite light buckets
- Full range of vertical adjustment
- Rallye 4000 Compact lamps in Xenon or Halogen

Technology:

Xenon technology, Free-Form Technology

Kit includes:

One custom grille, two auxiliary off-road driving lamps, one wire harness, two D1S 35W capsules (Xenon), two H1 bulbs (Halogen), two generation IV 12V Xenon ballasts (Xenon), two stone shields and mounting instructions. Off-Road Use only.

Part No:

F-150 Grille w/Xenon off-road driving lamps
for 04-08 models..... 009906011

F-150 Grille w/Halogen off-road driving lamps
for 04-08 models..... 009906001

F-150 Upgrade LED/CELIS® Taillamp Kit

Features:

- 24 LEDs which perform stop/turn functions
- CELIS® light guides perform the taillamp & parking function
- Easy plug & play installation
- Increased margin of safety with fast, illuminating and high visibility LED brake light function

Technology:

LED technology, CELIS® Technology

Kit includes:

Two LED/CELIS® taillamps, cab-mounted LED brake lamp and mounting instructions

Part No:

F-150 LED/CELIS® Kit w/cab-mounted LED brake lamp
for 04-08 models..... 009608801



Voted Best New Product under \$500 at the SEMA Spring Expo.

Accessories & Spare Parts

H87988371	Clear - Color Shieldz Protective Laminates (pair)
H87988391	Yellow - Color Shieldz Protective Laminates (pair)
H87988381	Blue - Color Shieldz Protective Laminates (pair)
H87988401	Smoke - Color Shieldz Protective Laminates (pair)
H83074001	D1S 35W Xenon Capsule
H83115202	H1 55W 12V - High Performance Xenon Blue Bulbs (pair) DOT/SAE
H83115001	H1 55W 12V - Standard Bulb (single) DOT/SAE
H71070642	H1 55W 12V - Optilux Extreme Yellow XY Bulbs (pair) Off-Road Only
H83135362	H13 60/55W 12V - High Performance Xenon Blue Bulbs (pair) DOT/SAE
008837121	H13 60/55W 12V - Standard Bulb (single) DOT/SAE
H71071152	H13 55W 12V - Optilux Extreme Yellow XY Bulbs (pair) Off-Road Only





Silverado Upgrade 2003-06 LED/CELIS® Taillamp Kit

Features:

- LEDs perform stop/turn functions
- CELIS® light guides perform the taillamp & parking function
- Easy plug & play installation
- Increased margin of safety with fast, illuminating and high visibility LED brake light function

Technology:

LED technology, CELIS® Technology

Kit includes:

Two LED/CELIS® taillamps, cab-mounted LED brake lamp and mounting instruction

Part No:

Silverado LED/CELIS® Kit w/cab-mounted LED brake lamp for 03-06 models 009608701

Silverado Upgrade 2007-11 LED/CELIS® Taillamp Kit



Features:

- LEDs perform stop/turn functions
- CELIS® light guides perform the taillamp & parking function
- Easy plug & play installation
- Increased margin of safety with fast, illuminating and high visibility LED brake light function

Technology:

LED technology, CELIS® Technology

Kit includes:

Two LED/CELIS® taillamps, cab-mounted LED brake lamp and mounting instruction

Part No:

Silverado LED/CELIS® Kit w/cab-mounted LED brake lamp for 07-11 models 010254801



Toyota Tundra 2006-current LED/CELIS® Taillamp Kit



Features:

- LEDs perform stop/turn functions
- CELIS® light guides perform the taillamp & parking function
- Easy plug & play installation
- Increased margin of safety with fast, illuminating and high visibility LED brake light function

Technology:

LED technology, CELIS® Technology

Kit includes:

Two LED/CELIS® taillamps, cab-mounted LED brake lamp and mounting instruction

Part No:

Tundra LED/CELIS® Kit w/cab-mounted LED brake lamp for 06- current models 010256801



Dodge Ram 2005-09 LED/CELIS® Taillamp Kit



Features:

- LEDs perform stop/turn functions
- CELIS® light guides perform the taillamp & parking function
- Easy plug & play installation
- Increased margin of safety with fast, illuminating and high visibility LED brake light function

Technology:

LED technology, CELIS® Technology

Kit includes:

Two LED/CELIS® taillamps, cab-mounted LED brake lamp and mounting instruction

Part No:

Ram LED/CELIS® Kit w/cab-mounted LED brake lamp for 05-09 models 010255801



Xenon Driving Lamp System Mustang GT Grille

Features:

- Convert standard fog lamp system to High Performance Xenon Driving Lamp System and retain the original GT grille

Technology:

Xenon technology

NEW!

Kit includes:

Two auxiliary Xenon driving lamps, one wire harness, two Generation IV Xenon Ballasts, two capsules D1S 12V 35W, two protective covers, mounting hardware, step-by-step instructions

Part No:

Xenon Driving Lamp System for Mustang GT Grille, 2004-09 Models 010289801

Dual Sport Light Mount System

Ideal for:

- Mounting auxiliary lamps on motorcycles with 43-46mm forks
- Mounting Hella's 70mm or Micro DE lamps

Kit includes:

Two fork mount side brackets, One crossbar with threaded position holes, Grade 8 heavy-duty fasteners *Auxiliary lamps sold separately.

Part No:

Dual Sport Light Mount System for 43-46mm forks H84244091

Hella's 70mm LED auxiliary lamp mounted with brackets (see listing on page 2). Micro DE is listed on page 15.



NEW!

BMW 3 Series E90 Taillamp Kit

Features:

- For 2007 and newer models
- Outer and inner assemblies for left and right side
- Clear turn signal indicator that lights amber with stealth-design bulbs
- Light rod optics accentuate the parking light function

Kit includes:

Two outer lamps, two inner lamps and mounting instructions

Part No:

BMW 3 Series E90 Taillamp Kit for 2007 - current models..... 009608801



Tire Pressure Monitoring System

Ideal for:

- All light trucks, SUVs, and passenger cars
- Spare tires and trailers

Features:

Hella's TC-400 Tire Pressure Monitor offers a fully active, radio-controlled system for permanent monitoring of tire pressure and temperature. High-tech sensors replace the tire valves and transmit pressure and temperature by radio to the central unit, which in turn forwards this data to the cockpit display. In the event of sudden pressure loss, the control unit triggers an optical and acoustic alarm via the display positioned in the cockpit. Additionally, the system also warns of slow loss of pressure and of excess pressure. The temperature gauge on the sensor allows the driver to determine the accuracy of the readings as the tires expand and contract from outside air temperature. The background color of the display can be adjusted to seven different colors to match the vehicle instrument lighting. In addition, a maximum of three sensors for spare tires can be added to the system.

- Best New Product Award at the SEMA Show
- Special help line: tpmshelp@hella.com

Kit includes:

One adaptable-color display, four sensor valves, one central data unit, harness and mounting instructions

Part No:

TC-400: Tire Pressure Monitoring System 009729001
Individual Sensor 166919001





Twin Supertone Horn



Ideal for:

- 12V Performance for all vehicles
- Dramatic look under your front grille

Features:

- Sound Level: 118 Db (A)
- Black Coated Metal with Red Protective Grille
- Frequency: 500 Hz High-tone/300 Hz Low-tone
- Current: 2 x 5.5 Amp

Kit includes:

One high-tone unit, one low-tone unit, relay, mounting brackets, and mounting instructions

Part No:

Supertone Kit High tone/Low tone, retail clamshell 003399803
Supertone Kit High tone/Low tone, display box 003399801

Twin Trumpet Horn



Ideal for:

- 12V Performance for all vehicles

Features:

- Sound Level: 110 Db (A)
- Frequency: 500 Hz High-tone/400 Hz Low-tone
- Current: 2 x 6 Amp

Kit includes:

One high-tone trumpet unit, one low-tone trumpet unit, relay, mounting brackets, and mounting instructions

Part No:

Twin Trumpet Horn Kit, retail clamshell 007424804
Twin Trumpet Horn Kit, display box 007424801

Universal Disc Horn



Ideal for:

- OE replacement for various applications

Features:

- Black Diaphragm and Galvanized Metal
- Sound Level: 115 Db (A)
- Frequency: 335 Hz Low-tone/400 Hz High-tone
- Current: 5.5 Amp

Kit includes:

One disc horn with bracket

Part No:

Universal Disc Low-Tone, retail clamshell 006958611
Universal Disc High-Tone, retail clamshell 002952013

Triple-Tone Air Horn



Ideal for:

- Performance for all vehicles

Features:

- Sound Level: 118 Db (A)
- Frequency: 810 Hz High-tone/765 Hz Middle-tone/600 Hz Low-tone
- Melodic Horn features change-over switch on compressor for selecting melodic or triple-tone sound

Kit includes:

One triple-horn unit with high performance compressor, relay, mounting brackets, and mounting instructions

Part No:

Triple-Tone Air Horn Kit with Compressor, retail clamshell 003001621
Triple-Tone Air Horn Kit with Compressor and Melodic Sound, retail clamshell 003001981

Twin-Tone Air Horn



Ideal for:

- Performance for all vehicles

Features:

- Sound Level: 118 Db (A)
- Frequency: 840 Hz High-tone/795 Hz Low-tone

Kit includes:

One high-tone unit and one low-tone unit with high performance compressor, relay, mounting brackets, and mounting instructions

Part No:

Twin-Tone Air Horn Kit with Compressor, retail clamshell 003001601



Retail Clamshells



High Performance Xenon Blue Bulbs

Ideal for:

- Whiter light closer to daylight helps night vision
- Xenon look

Features:

- Correct filament alignment assures maximum light output
- Blue coating creates Xenon look
- Produced under Hella's stringent testing requirements

Type:	Watts:	Part No:	
9003	60/55	H83140272	DOT/SAE
9004	65/45	H83155212	DOT/SAE
9005	65	H83165002	DOT/SAE
9006	55	H83170082	DOT/SAE
9007	65/55	H83175112	DOT/SAE
H1	55	H83115202	DOT/SAE
H3	55	H83135302	DOT/SAE
H7	55	H83145112	DOT/SAE
H9	65	H83357011	DOT/SAE
H11	55	H83125031	DOT/SAE
H13	60/55	H83135362	DOT/SAE
9003	100/80	H83140272	Off-Road Only
9004	100/80	H83155222	Off-Road Only
9005	100	H83165012	Off-Road Only
9006	80	H83170092	Off-Road Only
9007	100/80	H83175122	Off-Road Only
H3	100	H83135312	Off-Road Only
H4	100/80	H83140282	Off-Road Only
H7	100	H83145122	Off-Road Only

*All bulbs sold in twin packs.



Retail Packaging for Hella's High Performance Xenon Blue Bulbs

High Performance Xenon Yellow Bulbs

Ideal for:

- Color Contrast in extreme conditions
- GT racing look

Features:

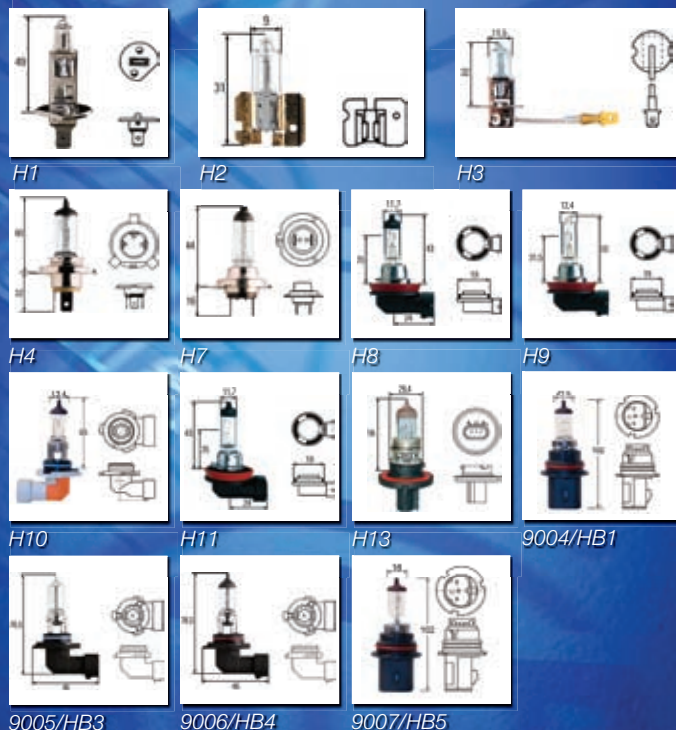
- Correct filament alignment assures maximum light output
- Yellow coating creates GT look
- Produced under Hella's stringent testing requirements

NEW!

Type:	Watts:	Part No:	
9003	60	H83160252	DOT/SAE
9004	65/45	H83155242	DOT/SAE
9005	60	H83165322	DOT/SAE
9006	50	H83170112	DOT/SAE
9007	65/55	H83175142	DOT/SAE

*All bulbs sold in twin packs.

Common Bulb Types



Hella Standard Bulbs

Type:	Watts:	Part No:	
893	37.5	H83020041	DOT/SAE
894	37.5	H83020011	DOT/SAE
9003	60/55	H83160211	DOT/SAE
9004	65/45	H83155091	DOT/SAE
9005	60	H83165241	DOT/SAE
9006	55	H83170001	DOT/SAE
9007	65/55	H83175001	DOT/SAE
9040	40	H83025001	DOT/SAE
H1	55	H83115001	DOT/SAE
H2	55	H83130001	DOT/SAE
H3	55	H83135051	DOT/SAE
H4	60/55	H83140101	DOT/SAE
H7	55	H83145031	DOT/SAE
H8	35	H83150081	DOT/SAE
H9	65	008357001	DOT/SAE
H10	45	H83120001	DOT/SAE
H11	55	H83125001	DOT/SAE
H13	60/55	008837121	DOT/SAE
R2	45/40	H83190001	DOT/SAE

*Halogen bulbs sold as singles.

Hella Xenon Capsules

Ideal for:

- Xenon Headlamps only
- Xenon Auxiliary Lamps only

Features:

- Produced under Hella's stringent testing requirements
- HID Yellow Capsule now available



Type:	Watts:	Part No:	Color:	
D2S	35	H83155242	Yellow	Off-Road Only
D1S	35	H83074001	Standard	DOT/SAE
D2R	35	H83070001	Standard	DOT/SAE
D2S	35	H83075001	Standard	DOT/SAE

*Xenon capsules sold as singles.

Optilux XB Bulbs



Ideal for:

- Xenon look

Type:	Watts:	Part No:	
9004	100/80	H71070327	Off-Road Only
9005	100	H71070347	Off-Road Only
9006	80	H71070367	Off-Road Only
9007	100/80	H71070387	Off-Road Only
H1	100	H71070227	Off-Road Only
H3	100	H71070181	Off-Road Only
H4	100/80	H71070201	Off-Road Only
H7	100	H71070307	Off-Road Only
H8	55	H71070772	Off-Road Only
H9	100	H71070792	Off-Road Only
H10	65	H71071012	Off-Road Only
H11	80	H71071032	Off-Road Only
H13	100/80	H71071052	Off-Road Only

*Optilux XB bulbs listed are twin packages. Check myhellalights.com for single packages.

Optilux XY Bulbs



Ideal for:

- GT look

Type:	Watts:	Part No:	
880	27	H71071172	Off-Road Only
881	27	H71071182	Off-Road Only
893	37.5	H71071192	Off-Road Only
894	37.5	H71071202	Off-Road Only
9004	65/45	H71070562	Off-Road Only
9005	65	H71070582	Off-Road Only
9006	55	H71070602	Off-Road Only
9007	65/55	H71070622	Off-Road Only
H1	55	H71070642	Off-Road Only
H3	55	H71070662	Off-Road Only
H4	60/55	H71070682	Off-Road Only
H7	55	H71070702	Off-Road Only
H8	35	H71071072	Off-Road Only
H9	65	H71071092	Off-Road Only
H10	42	H71071112	Off-Road Only
H11	55	H71071132	Off-Road Only
H13	55	H71071152	Off-Road Only

*Optilux XY bulbs listed are twin packages.

Hella Work Lamps

Ideal for:

- Construction, Agricultural, & Logging Vehicles

Features:

- Computer Designed Free-Form Reflector
- High Gloss Die-Cast Aluminum Reflector
- Shock-Resistant Molded Housing

Rubber and Picador Lamps include:

Work Lamp, H3 bulb, mounting instructions

Double Beam Lamp includes:

Work Lamp, two H3 bulbs, mounting instructions

Oval 100, Ultra Beam, Mega Beam Lamps include:

Work Lamp, H3 bulb, 4-point bracket with hardware, mounting instructions

Part No:

AS115 Double Beam Work Lamp (12V, Close Range).....	006991661
Oval 100 Work Lamp (12V, Close Range).....	996361271
Ultra Beam Work Lamp (12V, Close Range).....	997506301
Picador Work Lamp (12V, Close Range).....	996522201
Mega Beam Work Lamp (12V, Close Range).....	996234021
Rubber Work Lamp (12V, Close Range).....	H15986011
H3 Replacement Bulb (12V 55W, single)	H83135372



Double Beam



Oval 100



Ultra Beam



Picador



Mega Beam



Rubber

AS300 & AS400 Work Lamps

Ideal for:

- Emergency vehicles
- Construction, agricultural, mining and forestry equipment
- Any work vehicle where additional light is need

Features:

- Generation 4 ballast
- Mounting offers additional heavy-duty resistance
- AS300 housing is made of flame retardant UV resistant polymers that offer very high resistance to corrosion and impact damage while exhibiting a large degree of self-damping vibration protection
- AS400 housing is die-cast aluminum
- Connecting cable is always fed out of the housing by means of a brass cable-screwed connection, which prevents ingress of water
- Integrated grip recess on the housing top
- Special fastening holder with vibration damping for strong impact and vibration load

Technology:

Xenon technology

Single Lamp includes:

Lamp, ballast, D1S Xenon capsule with integrated igniter

Part No:

AS300 Xenon Work Lamp, Plastic Housing (12V, Close Range).....	996242501
AS300 Xenon Work Lamp, Plastic Housing (12V, Long Range)	996242551
AS400 Xenon Work Lamp, Aluminum Housing (12V, Close Range)	996242101
D1S Replacement Xenon Capsule (35W, single)	H83074001



Hella's Work Lamp Retail Program consist of clamshell packaging for all six lamps listed on the opposite page.

Optical Warning Systems

Hella's beacon series covers a wide range of different models from sophisticated rotating mirror modules to top-quality LED technology. All the lamps are available in different attachment versions. Therefore, the ideal beacon can be chosen for every application purpose. All the beacons and optical warning systems have been tested under the toughest of conditions for continual heavy-duty use.



Rotating Halogen Beacons

Hella's Rotating Halogen Beacons consist of Rotaflex/Rotafix, KL Rotacompact and KL-7000 and feature:

- Well-established model series in a compact size and distinctive design
- High-sheen vapor-plated parabolic reflector and bulb form one unit
- Domes constructed of high-impact plastic
- Dependable gear and belt drives

All Hella beacons are available with several different mounting options including fixed, magnetic and pole mounting.



Rotaflex/Rotafix

LED Beacons

Hella's range of LED beacons and warning lights are designed and manufactured with the following features and benefits:

- Withstand toughest operating conditions
- Maximum consistent light output
- Coolest LED operating temperatures
- Advanced flash patterns and low voltage warning
- SAE Class I homologation

Model Choices include: Beacons (K-LED 180/360/400), Deck/Dash Warning Light (DDL 100/200), External Warning Lights (EXL 400/650, DuraLED), LED Mini Lightbar (MLB170)



Strobe Beacons

Hella's strobe beacons and warning lights cover a broad range of product requirements and feature:

- High quality fresnel lens optics to ensure accurate light output
- Dependable high power electronics and strobe tube which provide maximum light output and longer life
- Robust construction for maximum product life and vibration resistance
- SAE Class II homologation

Model Choices include: KLX-1 (Industrial Beacon), KLX-7000 (Multi-purpose Automotive), KLX-7500, BSX-Micro (Warning Lamps)



Relays & Switches

Hella offers its customers a very broad range of more than 1,000 different items for the following segments:

- Standard switches
- Module switches
- Vehicle-specific switches such as oil pressure, reverse light, stop light and thermostats

The increase in control electronics components place a particular demand on the vehicle's power system. Since supplying the required power is a very costly matter, there is a trend towards very low control currents. Moreover, users expect reliable operation throughout the vehicle's design life. Key influencing parameters are the expected life of the contact system and the light source.

The NEW RANGE OF MODULE SWITCHES takes account of user wishes and meets the high demands of our customers with regard to design, quality and safe switching.

Mini Relay 40 Amp SPST with Bracket 12V	H41510061
Micro Relay 10/20 Amp SPDT with Resistor 12V	H41524021
Mini Relay 20/40 Amp SPDT with Resistor 12V	H41388101
Mini Relay 20/40 Amp SPDT with Bracket 12V	H41388461
Mini Relay 15 Amp SPST 12V with 15A Blade Fuse	003510362
Mini Relay 15 Amp SPST 12V with 25A Blade Fuse	H41510131
On/Off Rocker Switch Green	H61920001
SPST Rocker Switch with location and pilot lights	007832021
Heavy Duty Battery Master Switch, Single circuit, waterproof switch is UL approved.	
Removable key. Base diameter is 2.25"	002843011
Replacement Key	706729011

Green Rocker Switch

Battery Switch

Motorsports

Hella provides lighting products to professional race teams that demand the best lighting that the world market can provide. Even though Hella tests every product in a laboratory environment to exhausting standards, the ultimate test is in the hands of professional race teams. Hella realizes that in order to be the best, we must learn from any failures that may incur in an ultra harsh environment.

Grand Am teams using Hella Lamps include the following: 2007 Champion, Gainsco/Bob Stallings Racing; 2006 Champion, Krohn Racing; 2005 Champion, Wayne Taylor Racing. American Le Mans winners include Andretti Green Racing, Dyson Racing, and High Croft Racing. Off-Road winners include Baldwin Motorsports, Collins Motorsports, and Robby Gordon Motorsports.



Art Eugenio, TracksidePhoto



myhellalights.com



Hella introduces a brand new website oriented to the end consumer. The website features both halogen and Xenon auxiliary lamps, upgrade kits, accessories, and bulbs with information catered to the end consumer. The product pages explain what the product is ideal for, features, explanation of technology used, package contents, and part numbers. Diagrams,

beam patterns, testing information, accessories list and more is available for each product.

Also available is the complete Hella Motorsports update featuring Le Mans, Grand Am, and Off-Road teams using Hella lights. The Fun page features wallpaper for your PC, Light Driver 2.0, and Hella's E-factory. Additionally, the website has a direct link to the DIY/Tech website and the Hella store.

DIYs & Technicians

Hella introduces a new intranet site geared toward do-it-yourselfers and technicians. If you want to dig deeper into the world of Hella, this site can help you get the information you need. The site features free access to technical bulletins, installation tips, up-to-date information and downloadable catalogs and brochures. Sign up today and get started.



hellausa.com

Hellausa.com features links to the Aftermarket Club for businesses, the DIY/Tech site, myhellalights.com, hellamining.com as well as links to press releases, heavy-duty products, and corporate Hella information. Visit www.hellausa.com.

Hella Replacement Parts Program

Hella offers three guarantees with its extensive range of replacement lighting, engine management, and electrical products: best functionality, optimum fit, and lasting customer satisfaction. All replacement parts are made to the same specifications and quality standards as the parts Hella makes for its OE customers around the world.

Hella is committed to producing the highest quality products possible and maintains a zero tolerance for defects in order to assure consistent and safe performance every time. This commitment to quality is found in every Hella manufacturing facility around the world. Hella maintains exacting production standards and places all of its replacement products through rigorous testing to ensure the high level of technical performance and reliability that customers expect from the Hella brand.

With more than 6,000 products in OE quality in the Thermal Management range, Behr Hella Service has unrivalled market cover. Whether air conditioner wearing parts, radiators, VISCO® clutches and fans, tools, and PAO-Oil 68 for garages, you can obtain all items from a single source – Behr Hella Service.



Lighting



Electrics



Electronics



Thermal Management





201 Kelly Drive
Peachtree City, GA 30269



Hella, Inc. • www.hellausa.com • 1.800.247.5924 • Fax: 770.631.7575